

# Fargekart

## Lakkmaling

	10501 Polar White BG		33390 Light Blue MC
	10231 Pure White BG		32800 Souvenirs Blue BG
	10000 White MC/DC		30100 Navy Blue MC/DC
	10381 Off White BG		34161 Cobalt Blue BG
	10121 Matterhorn White BG		35141 Flag Blue BG
	19500 Light Grey MC/DC		31810 Britannia Blue BG
	21401 Cream BG		19990 Black BG/MC
	22210 Pale Cream MC/DC		46121 Marine Green BG
	12011 Pale Grey BG		50190 Survival Orange BG
	10141 Town Grey BG		50800 Pillarbox Red MC
	11480 Mid Grey MC/DC		54121 Radiant Red BG
	12221 Smoke Grey BG		53121 Bordeaux Red BG
	38140 Ice Blue BG		

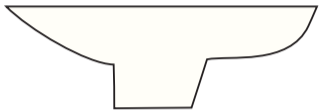
BG = Hempel's Brilliant Gloss

DC= Hempel's Non-Slip Deck Coating  
MC = Hempel's Multicoat

Finish/Glans for Brilliant Gloss er høyglans.

# Fargekart

## Bunnstoff



10101 White (ultimate)  
A E H



10430 Penta Grey  
D H



12400 Grey  
A E



19990 Black  
A B C D E F H



30390 True Blue  
C D F H



31750 Souvenirs Blue  
A E



37110 Dark Blue  
A B E



50000 Red Brown  
C



56460 Red  
A E

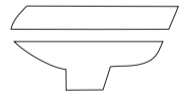


59151 Red  
F

A- Hempel's Mille NCT  
B- Hempel's Mille Standard  
C- Hempel's Classic  
D- Hempel's Alu Prop NCT

E- Hempel's Hard Racing TecCel  
F- Hempel's Silic One  
H- Hemptaspeed TF

Før nedsenkning i vann.



Etter nedsenkning i vann.

**Advarsel:** Selv om alt er gjort for å matche farge og glans nivå så nøyaktig som mulig, anbefaler vi deg å sjekke i tillegg før påføring.