



Hella marine
Vision and Innovation

Product News

Next level technology
offering incredible
intensity

18W 1500 Lumen



Sea Hawk-XLR LED Floodlights

Engineered light patterns

Advanced optical systems deliver incredible illumination without glare. Spread lamps illuminate a wide, close-range spread over a cockpit, foredeck or working area. Spot lamps provide a narrower, more concentrated illumination for tuna towers, yacht masts or for forward facing lighting on a variety of applications.

Unique Corrosion Proof Housing

Rather than cast and machined from aluminium then protective coated, Sea Hawk-XLR housings are precision injection moulded from thermally conductive ceramic polymer. This advanced material draws heat from internal electronics for reliable long-term operation and eliminates the need for an aluminium housing in this class of floodlight, removing corrosion risks in the harsh marine environment.

Integrated Dimming

High/low light intensity functions are standard with every lamp.

Multivolt 9-33V DC

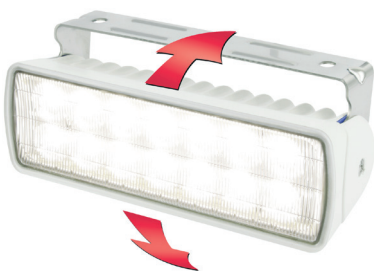
Advanced electronics ensure reliable illumination and lamp protection even under severe voltage fluctuations and low battery voltages.

Pre-wired with marine cable

High quality sealed cable assemblies for time saving, completely sealed installations.

Designed and manufactured in New Zealand

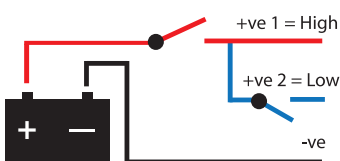
Sea Hawk lamps carry a 5 year warranty.



Friction mounts allow
adjustment without tools.



Completely sealed lamp and cable entry.
Polished 316 stainless steel bracket.

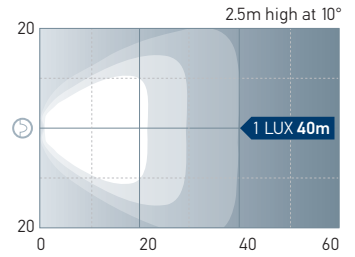


Two-Step high/low intensity options.

Sea Hawk-XLR series

White Light LED Floodlights - Spread

Housing Colour	Part Number
Black Housing	2LT 980 740-001
White Housing	2LT 980 740-011



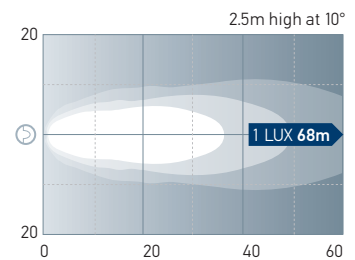
Spread beam pattern

Spread pattern Applications;

- Cockpit
- Foredeck
- Working areas

White Light LED Deck Lamps - Spot

Housing Colour	Part Number
Black Housing	2LT 980 740-201
White Housing	2LT 980 740-211

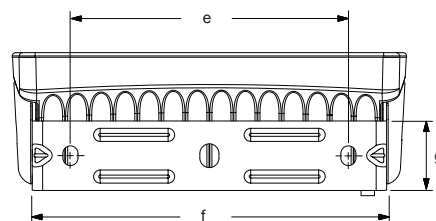
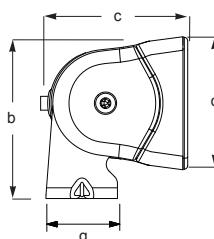
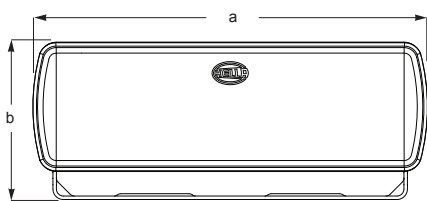


Spot beam pattern

Spot pattern Applications;

- Low speed docking
- Forward facing to illuminate objects in the water
- Spreader lamps on yacht masts

Material Description	'Non metal' Thermally conductive ceramic polymer housing	
Lens Material	Heavy duty Grilamid lens	
Bracket	Polished 316 stainless steel	
Colour Temperature	5000K (White)	
Cable	Pre-wired with 2.5m of triple core marine cable	
Operating Voltage	Multivolt 9-33V DC	
Degree of Protection	IP 67 - Completely Sealed	
Power Consumption	High Intensity Mode	18W (1.5A@12V / 0.75A@24V)
	Low Intensity Mode	2W (0.17A@12V / 0.08A@24V)
Weight	450g (including cable)	
Light Output	1500 lumens	
Approvals	CE RCM	



Dimensions

a	= 170mm / 6.69"
b	= 68mm / 2.68"
c	= 58mm / 2.28"
d	= 55mm / 2.17"
e	= 120mm / 4.72"
f	= 154mm / 6.06"
g	= 30mm / 1.18"