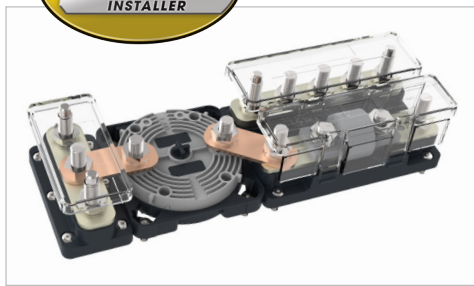




1 Fit base

2 Add wiring

3 Clip on actuator



new product:

EZ-Mount Battery Switches



As easy as 1, 2, 3, these revolutionary battery switches allow you to wire from the front. Never has installation been so easy and cabling so accessible. With their shared interconnection height, EZ-Mount battery switches “cluster” directly with the Pro Installer Busbar Range, resulting in the fastest, most compact installations. All ratings, footprints and features of the EZ-Mount switch match the high quality of our standard switches:

- Tested to UL1107 ignition protection, CE
- Tinned copper 10mm (3/8") studs
- Stainless steel washers/nuts
- Fiber reinforced plastics
- 400A Continuous / 600A 5 mins Intermittent / 1500A 10 secs Cranking
- Waterproof to IP66

Same interconnection height as Pro Installer

Removable knob allows isolation during servicing

3 removable sideplates for protection

Industry standard 3.85" x 3.85" footprint

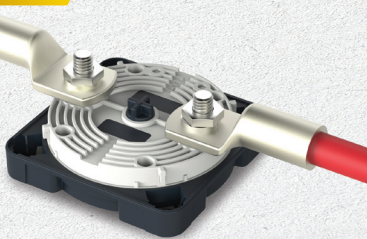
new product:

EZ-Mount Battery Switches

1 Fit base



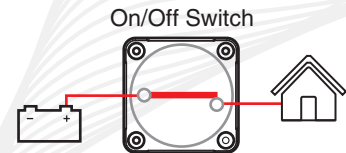
2 Add wiring



3 Clip on actuator



770-EZ

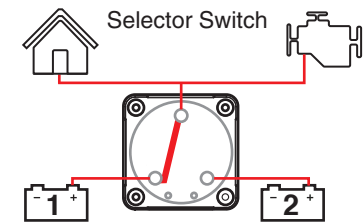


NEW Pro Installer EZ-Mount On/Off Battery Switch

A powerful new generation battery switch with outstanding performance and features for both the installer, and end user. Optimized cable access makes installation a breeze. Pro Installer switches set the new benchmark with outstanding ergonomics, intuitive look/feel, and are engineered from the finest materials to withstand the harsh marine environment.



771-S-EZ



NEW Pro Installer EZ-Mount Selector Battery Switch

Power requirements on boats have increased, and the Selector switch offers high power capacity (400 amps continuous), the ability to easily fit doubled cables, and conform to the industry standard mounting footprint (Guest, Perko, Blue Sea).

Please note selector switches will not separate electronics from harmful engine starting spikes.

Specifications

Item #	OEM #	in LxWxH	mm LxWxH	Rating (A DC)			Voltage (V DC)	Operation	Stud Detail
				Cont	Inter	Crank			
770-EZ	770-EZ-B	3.85"x3.85"x3.62"	98x98x92 mm	400	600	1500	12-48	On/Off	2x (3/8" / 10 mm)
771-S-EZ	771-S-EZ-B	3.85"x3.85"x3.62"	98x98x92 mm	400	600	1500	12-48	1-2-Both-Off	3x (3/8" / 10 mm)