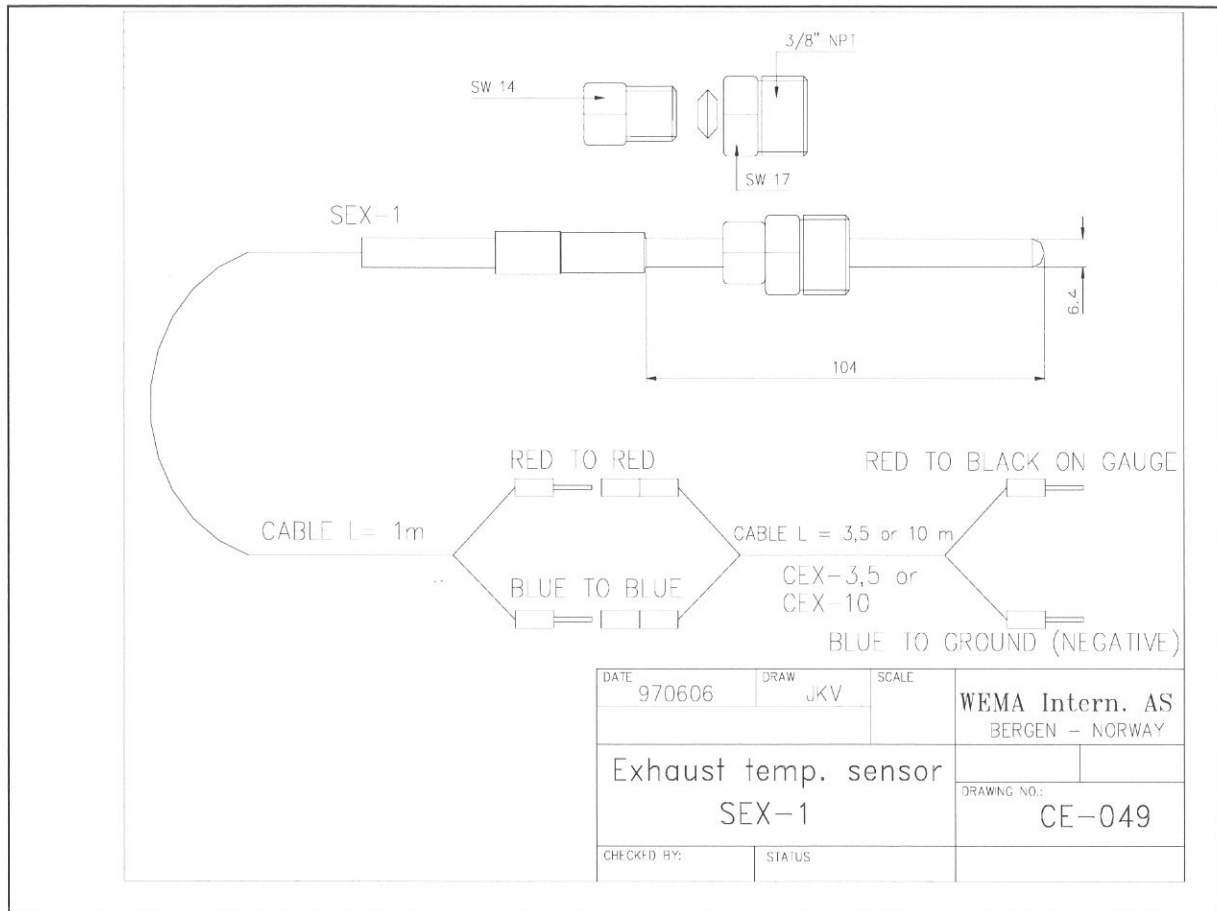


<b>Exhaust Temperature Sensor</b>	<b>SEX-1</b>	<b>CE</b>
	art.no: 150210	Revision: 1998-5-20



### **Description:**

The WEMA exhaust temperature sensor is made of stainless steel (316). The SEX-1 runs with gauge IEX-1. Delivered with CEX-3,5 (3,5 m extension cable). Always use the sensor together with either CEX-3,5 or CEX-10 extension cables. It is a special resistance value in these extension cables to give the correct reading on the gauge.

Temperature range: 20-800°C

Resistance: 20-120 ohms

CEX-10, 10 m extension cable also available

### **Installation:**

Insert sensor until it is in the middle of the exhaust tube and tighten the small nut carefully.

Extension cable CEX-3,5 or CEX-10 must be connected to SEX-1, red wire to red wire and blue wire to blue wire. CABLES MUST NOT BE CUT.

Connect the blue wire from CEX-3,5/CEX-10 to ground (-).

Connect the red wire from CEX-3,5/CEX-10 to the black wire on the gauge IEX-1.

### **Troubleshooting:**

Disconnect CEX-3,5/CEX-10 from the gauge IEX-1 and connect the two wires from CEX-3,5/CEX-10 to a multimeter. The extension cable CEX-3,5/CEX-10 should be connected to SEX-1 during measurement. Set the multimeter to resistance. Red wire from CEX-3,5/CEX-10 goes to + (positive) on multimeter, blue wire from CEX-1 goes to - (negative) on multimeter. When cold (20°C) it should read 20 ohm.