

# Cobra MARINE™

**MARINE VHF TRANSCEIVER**  
ÉMETTEUR-RÉCEPTEUR VHF MARINE  
RICETRASMITTENTE VHF MARINE  
TRANSECTOR VHF MARINE  
VHF MARINRADIO



INTERNATIONAL, U.S.A.  
AND CANADA CHANNELS



ONE BUTTON CLASS D DSC  
(With Dedicated Ch. 70 Receiver)



GPS CAPABILITY



NOISE CANCELING  
MICROPHONE WITH CONTROLS



SUBMERSIBLE  
MEETS JIS7 STANDARDS



## UNIQUE FEATURES FOR THE MR F55 EU:

- Dual Watch
- Scan

## ACCESSORIES INCLUDED:

- Flush Mount Kit
- Surface/Overhead Mount
- GPS Interface Cable



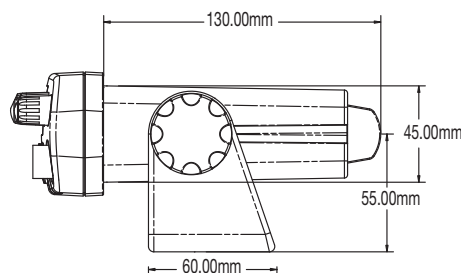
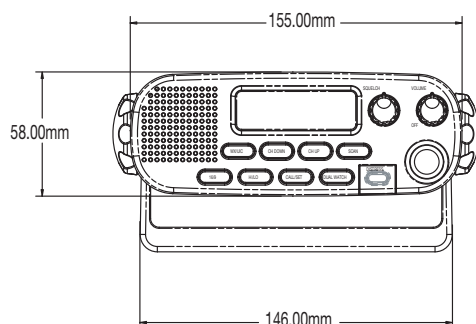
Surface and flush  
mounting kits included

# MR F55 EU

Feature	Benefit
1 or 25 Watts	Dual output power for short and long communication.
International, U.S.A. & Canada Channels	Allows operation on any of the three (3) different channel maps established for these areas.
Private Channels	Available for programming in country of purchase.
Instant Channel 16	Instant access to channel 16 for emergency situations.
DSC (Digital Selective Calling) Class D with dedicated ch. 70 receiver	Meets internationally recognized requirements for RTCM- SC-101 and Class D Digital Selective Calling that allows you to send a distress signal at the touch of a button or exchange position information with other boats or stations.
GPS Capability	When connected to a Cobra or most other GPS receivers, you can send your position to other boats in an emergency, or exchange position information with other boats or stations.
Dual Watch	Monitors two (2) channels at once — Channel 16 and one (1) user selected channel.
Scan	Scan all channels to find conversations in progress.
Signal Strength Meter	Shows the strength of incoming signal.
Illuminated Function Keys	Allows high visibility of function keys.
Illuminated LCD Display: Large	Allows high visibility of display.
Noise Canceling Microphone with Controls	Blocks background noise. Controls allow instant access to channel 16 and changing of channels & setting features.
External Speaker Jack	Allows connection of an external speaker (not included).
Submersible	Meets JIS7 standards; Submersible for 30 minutes in one meter deep water.

#### Included Accessories

Flush Mount Kit & Surface/ Overhead Mount Bracket	Easy installation of radio in or on almost any flat surface with supplied hardware.
GPS Interface Cable	Allows connection of a GPS receiver.



#### Unit Specifications

General		
Number of Channels	All: International, U.S.A., Canadian	
Channel Spacing	25 kHz	
Modulation	5 kHz Max.	
Input Voltage	13.8 VDC	
Current Drain:		
	Stand-by	200 mA
	Receive	300 mA
	Transmit	5 A @ High Power 1 A @ Low Power
Temperature Range	-20°C to 60°C	
Unit Dimensions	159 mm x 57 mm x 180 mm	
Unit Weight (Lbs)	1151 g	
Receiver		
Frequency Range	156.050 to 162.425 MHz	
Receiver Type	Double Conversion Super-Heterodyne	
Sensitivity:		
	20 dB Quieting	0.35 uV
	12 dB Sinad	0.30 uV
Adjacent Channel Selectivity	-60 dB	
Intermodulation and Rejection	-60 dB	
Spurious & Image Rejection	-60 dB	
AF Output	4 Watts @ 8 Ohms	
Transmitter		
Frequency Range	156.025 to 162.425 MHz	
RF Output Power	1 or 25 Watts	
Spurious Emissions	-60 dB @ High Power -55 dB @ Low Power	
Microphone Type	Electret	
Microphone Impedance	2000 Ohms	
Frequency Stability	+/-10 ppm	
FM Hum & Noise	40 dB	

#### Packaging Specifications

Individual Clam/Box Dimensions	314 mm H x 236 mm W x 75 mm D
Individual Clam/Box Weight	1657 g
Master Pack Qty.	4
Master Pack Dimensions	317 mm H x 255 mm W x 338 mm D
Master Pack Weight	7230 g
SKU #	MR F55 EU
UPC #	0 28377 20078 6

Features and specifications subject to change.

**NOTHING** Comes Close to a Cobra®

©2003 CEEL, Dungar House, Northumberland Avenue, Dun Laoghaire, County Dublin, Ireland

Visit our website: [www.cobra.com](http://www.cobra.com)

**5 MR F55 EU SP 5/04**

Nothing comes close to a Cobra® and the snake design are registered trademarks of Cobra Electronics Corporation, USA. Cobra Electronics Corporation™, CEEL™ and CobraMarine™ are trademarks of Cobra Electronics Corporation, USA.