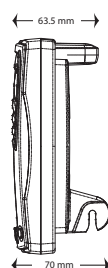
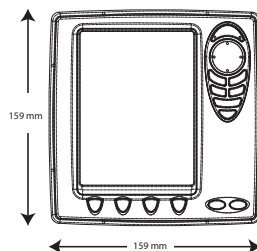


Cobra MARINE™

MARINE CHARTPLOTTER

MC 600Ci EU



Designed for
MAX
C-MAP NT

iASAP

NIGHTWATCH

| FEATURES | BENEFITS |
|---|--|
| 6" Colour TFT Display with Anti-Reflective Coating | Complete visibility in even the brightest sunlight conditions. 320V X 240H, 256 Color, brilliant display. |
| GPS Antenna Built-In | Easy installation without a need for an external antenna * Note- Flush mounting is not an option for this model. |
| 12 Channel WAAS GPS with iASAP | Fast GPS position locking and retention. Impervious to some typical barriers to GPS in the marine environment. |
| NMEA 0183 In and Out | Easily interfaces with Autopilots, DSC Radios, and Instruments. Compatible with NMEA compliant manufacturers |
| Removable Face Plate | Match the style of your dash with the flat black or metallic silver faceplates included. |
| Submersible to IPX7 or JIS7 | Meets the IPX7 specification. Submersible in 1 Meter of water for 30 minutes. Ensures optimal performance in any weather conditions. |
| 3D Mapping | View Charts in either top down or NEW 3D modes. |
| Sunlight and NightWatch® Modes | Day or Night. Backlighting and Colors used in the display can be easily set for either condition. |
| Accepts C-MAP NT MAX or C-MAP NT+ C-Cards | Replacing an old C-MAP™ based plotter? Want to upgrade to the latest features available in marine cartography with C-MAP NT MAX™? This GPS can use either your old or new C-MAP™ C-Cards. |
| Detailed Base Map Included | Includes (worldwide) major rivers, lakes and roads. Coastal Navigation to entrance buoys for worldwide destinations. |
| Analog Style Speedometer | Water Skiing, Performance Boating, Cruising or Fishing? If speed is important to you then this is the GPS for you! |
| Tilt and Swivel Mounting Bracket | This bracket and the wide viewing angle allow for flexible mounting options and clear viewing from any angle. |
| Alarms: Anchor Drag, Arrival, Off Course, Proximity, Depth, Etc. | Customizable alarms to meet any boaters needs. This GPS can also be connected to a typical piezo alarm that will increase the volume of the internal alarm. Handy for Anchor Alarm, Grounding Alarm, etc. |
| User points and Routes: 1000 Waypoints, 50 Routes, 50 Points/Route | User points can be either Waypoints or Marks. Waypoints can be sequenced in routes for creating trips. Up to 50 waypoints per route can be used. Get from here to there with ease. |
| Tracks: 10 Tracks with 16 Color Options | Retrace your path using 10 trails for different trips. A total of 10,000 track points can be recorded. Specify up to 16 different colors to differentiate the trips. |
| Waterproof Warranty | Please contact your local dealer for details. |
| DC Accessory Plug Included | Instant gratification with easy installation. Also allows for permanent install with NMEA I/O at a later date. |
| OPTIONAL FEATURES | BENEFITS |
| C-MAP's NT MAX™ C-Cards | Detailed charts with advanced features like Dynamic Nav aids, Tides and Currents, Embedded Photographs, Guardian, RouteCheck and ClearInfo. www.maxnavigator.com - for details |
| C-MAP's PC Planner | Available through your C-Map Dealer. PC Planner allows you to view your C-Map NT Max™ C-Cards from the comfort of your home or office. Trips can be saved to a user card and imported into your CobraMarine™ GPS. |
| Cobra Black Box Fishfinder | Turn your MC600Ci EU into a fully functional fishfinder with the Cobra Black Box Fishfinder and transducers. www.cobra.com - for details |

SPECIFICATIONS

| | |
|---------------------------|---|
| Unit Dimensions | 7.75"H x 6.25"W x 3.25"D (197mm x 159mm x 83mm) |
| Unit Weight | 1lbs., 14oz(843g) |
| Display Size | 5.7" Diagonal (145mm) |
| Display Resolution | 240 x 320 pixels |
| Power Source | 10-35V |

PACKAGING SPECIFICATIONS

| | |
|---------------------------------------|---|
| SKU # | MC 600Ci EU |
| UPC | 0 28377 20103 5 |
| Individual Gift Box Dimensions | 8.5"H x 13"W x 5"D (215mm x 330mm x 127mm) |
| Individual Gift Box Weight | 2lbs., 5oz (1049 g) |
| Master Pack Dimensions | 8.9"H x 13.6"W x 10.5"D (226mm x 345mm x 266mm) |
| Master Pack Quantity | 2 |
| Master Pack Weight | 4lbs., 14oz (2203g) |

Specifications subject to change without notice.

INCLUDED ACCESSORIES

| |
|---------------------------|
| Tilt and Swivel Mount |
| DC Accessory Plug |
| Two Removable Face Plates |
| Manual |
| Quick Start Guide |

OPTIONAL ACCESSORIES

| |
|---|
| MF 2500- Black Box Fish Finder |
| C-Map PC Planner- Available from C-Map Dealers |

MARINE CHARTPLOTTER Cobra MARINE™

MC 600Ci EU



6" Colour Display
Featuring Anti-Reflective Coating



Built in Antenna and DC Accessory Port Adapter



Cobra Marine Exclusive iASAP GPS Technology



2 Custom Colour Face Plates Included in Box

Designed for
MAX
C-MAP NT



Maps can be viewed in either Traditional Top Down or 3D Mode

Nothing Comes Close to a Cobra®

Cobra®, NightWatch®, Nothing Comes Close to a Cobra® and the snake design are registered trademarks of Cobra Electronics Corporation, USA. Cobra Electronics Corporation™, CobraMarine™ and iASAP™ are trademarks of Cobra Electronics Corporation, USA. C-MAP™, C-MAP Navigation technology™, C-MAP NT MAX™ and C-MAP NT+™ are registered trademarks of C-MAP S.r.l.

©2005 CEEL, Dungar House, Northumberland Avenue, Dun Laoghaire, County Dublin, Ireland

Visit us on the web: www.cobra.com

MC600CiEU SP 10/05

English

Français

Italiano

Deutsch

Español

Português

Norsk

Svenska

Dansk

Ellinika

Suomi

Nederlands

**MC 600Ci EU****ADVANCED COASTAL CHART FEATURES**

MAX USES OPTIONAL, DETAILED CHART CARDS FROM C-MAP NT. Features include:

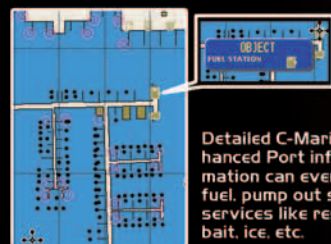
- **MAJOR ROADS INCLUDED**
For easy chart scrolling and reference



See something on the chart not sure what it is? Move the cursor over the object for a clear description and explanation. Navaid characteristics are spelled out in plain language.



Extensive land elevation and bottom depth contours for clear chart presentation and interpretation.



Detailed C-Marina Port Plans and Enhanced Port info. Detailed marina information can even show locations for fuel, pump out stations and other local services like restaurants, shopping, bait, ice, etc.

- **TIDE AND CURRENT INFO**
Tidal current arrows to indicate direction and speed of currents and more

- **DYNAMIC NAVAIDS**
Blinking at same frequency as lights



- **PICTURES**
"Click" on camera icon for detailed photos. Feature available with optional C-MAP NT MAX C-Cards. www.maxnavigator.com for details

OPTIONAL Cobra MARINE™ ACCESSORIES



Turn your MC 600 into a fully functional fishfinder with the cobra MF 2500 Black Box Fish Finder and transducers. Vertical display for the best Combo Mode solution when charting and fishing.



Connect the MC 600 Ci EU to a CobraMarine™ Fixed Mount VHF Radio to add GPS position for emergency calling.



2 CUSTOM COLOUR FACE PLATES INCLUDED IN BOX



REVERSE POLARITY AND OVER VOLTAGE PROTECTION



TILT AND SWIVEL EASY MOUNTING BRACKET



BUILT IN ANTENNA AND DC ACCESSORY PORT ADAPTER

HARDWARE**ZOOM**

Instantly zoom in and out to multiple chart levels

ERGONOMIC KEYPAD

With easy access to all major functions

ILLUMINATED FUNCTION KEYS

For easy nighttime use

PAGE BUTTON

Guides you through all the valuable data

ESC BUTTON

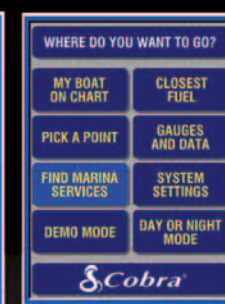
Always brings you back to the center of the chart

SOFTWARE

Page specific menu options. Multiple ways to access most functions



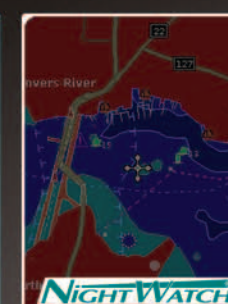
Multiple data pages with easy toggling between pages. Fully customizable boxes including analog speed gauges.



Friendly welcome page with easy access to demo and other features.



Friendly tabs for easy page surfing. They disappear for maximum screen use.



Easily switch to Cobra's Exclusive Nightwatch. Allows for night time viewing without night blindness.



Maps can be viewed in either traditional top down or 3D mode



Split mode allows you to view the chart in combination. The standard view is Chart/Highway. Optional views with the Cobra MF 2500 Black Box Fishfinder include Split Zoom and 50 Khz/200Khz.



Pick your favorite color scheme. Like the look of paper charts? Have become accustomed to electronic charts? Need maximum contrast for those bright days?

CUSTOM FUNCTION KEYS
Press and hold to save access to your favorite data

DEDICATED MAN OVERBOARD KEY
Marks your current position and routes you back in an emergency

INSTANT ACCESS
To power on/off and backlighting controls