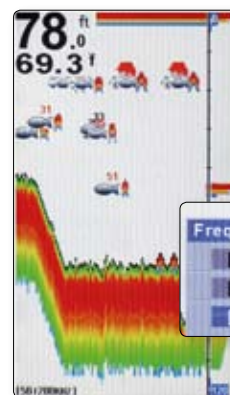
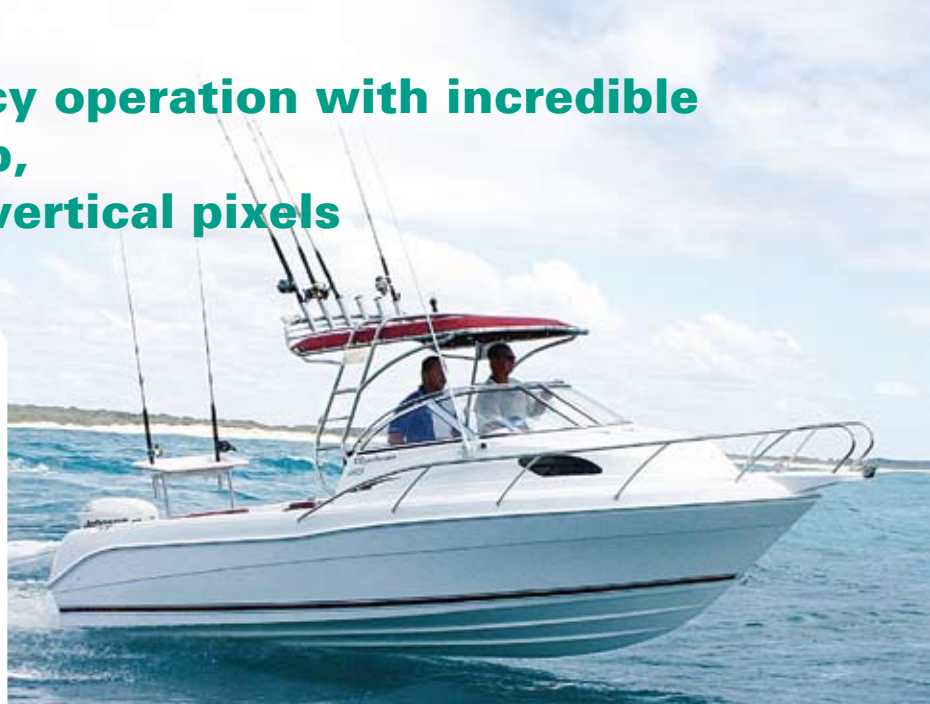


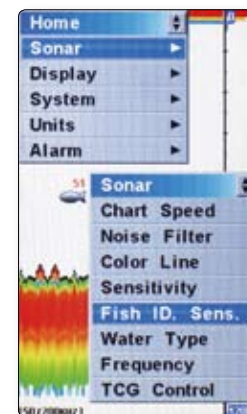
True 50/200 kHz dual frequency operation with incredible depth performance and a crisp, high-definition screen of 480 vertical pixels and 65536 colors!

- ▶ The new **Condor 345c df** represents the latest achievement in fishfinding technology.
- ▶ Thanks to the new Condor's exclusive *MultiPulse technology*, this new unit combines amazing depth capability with perfect, effective fish detection.
- ▶ The bright color screen of the **Condor 345c df**, with its 480 vertical pixels, provides high resolution, clear and crisp color images, and a 16 bit color depth (65536 colors). Thank to TFT technology, it is perfectly viewable, even in full sun light or when wearing polarized sunglasses. The white, dimmable LED backlighting, allows the color screen of the **Condor 345c df** to be viewed clearly under any light conditions.
- ▶ A convenient window menu system makes using the **Condor 345c df** extremely simple and intuitive, and each function can be easily and conveniently accessed through a simple, self-explaining menu system. The combination of the "OvalPad" on the top, with the six keys on the bottom, make access to the menu options extremely simple and intuitive.
- ▶ The hydrodynamic 50/200 kHz dual frequency transom mount transducer of the **Condor 345c df** has a built-in water surface temperature sensor, and provides excellent performance at all boating speeds, up to 40 knots.
- ▶ Packed in a compact housing, the **Condor 345c df** easily fits on any dash board. The use of a single plug for both power and transducer means installing and removing the unit takes only a matter of seconds.



- ▶ The unit can be either set for single frequency operation, 50 kHz or 200 kHz, at your convenience, or for dual frequency scanning, as shown in this image. In this case, the digital depth indicated on the fish icon can be red or black according to the frequency of the detected echo.

The convenient menu system, < with its intuitive windows-like interface, allows you to access all the advanced functions of Condor 345c df easily and quickly.



Condor 345c df

50/200 kHz Fishfinder

► FEATURES

- Large, high contrast, 4.3" color TFT LCD screen, provides perfect visibility even with polarized sunglasses
- High resolution 480 x 272 pixel with 65,536 colors
- Dual frequency 50/200 kHz operation
- Output power: 4000W peak (500W RMS)
- MultiPulse technology for exceptional depth capability of over 2300 ft (700 meters)*
- 3 color display modes, including night view mode
- Sophisticated Fish ID recognition software with the digital readout of the depth above fish symbols
- Big digital depth, temperature and voltage readouts
- Dual function color line, that gives relevant information about the nature of the bottom
- Automatic range feature with direct control and instant switch to manual
- Adjustable chart speed
- Multiple level zoom function, allows to enlarge the image at any scale
- Keel offset function, for precision depth readouts
- Image of instantaneous echo in column
- Alarms: shallow water, fish, low battery
- Three selectable background colors (white, blue, black)
- Transom mount hydrodynamic 50/200 kHz dual frequency transducer with built in temp probe included, 20' cable (6m)
- Memory that keeps all the settings even when the unit is switched off
- High intensity, dimmable backlighting for night use
- TGC control with high sensitivity receiver, for outstanding depth performance
- Multilingual menu system, with 16 languages
- Operation voltage: 12 V
- Dimensions: 6.3" x 6.3" x 2.6" (160 x 160 x 65 mm)



MPT
MultiPulse Technology



50/200 kHz transom transducer included.



- The convenient "-" and "+" direct access keys, allow the user to exit the auto-range mode instantly and adjust the depth range manually, without opening any menu, with the touch of a single key. In the same way, it is possible to return to the automatic mode simply by pressing the "-" and "+" keys together.