

# FRESH WATER PUMP OPERATING MANUAL

## PRODUCT INFORMATION

Model Number(s)	10760: Pump 10761: Pump and strainer	<b>Other Features:</b> <ul style="list-style-type: none"> <li>- Quiet performance</li> <li>- Corrosion resistant materials</li> <li>- Operates without accumulator tank</li> <li>- Low Amp draw</li> <li>- Snap-in fittings</li> </ul>
Max Flow Rate	3.3 GPM	
Electrical	12V DC, 7.0 Amps Max.	
Dimensions	H 100 x W 150 x L 230 mm	
Weight	2,000g	
Cut-off Pressure	35 PSI (Min. 20 PSI)	
Self-Priming	Yes	
Running While Dry	Yes	
Built-in Check Valve	Yes	
Sealed Pressure Switch	Yes	
Connectors included	1/2", 1/2" elbow, 5/8", 5/8" elbow	

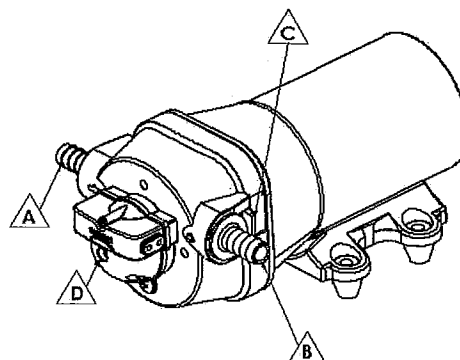
## OPERATION

\* Before using, make sure the battery is fully charged and the water tank is filled.

Open all faucets and turn on the pump power switch to let the water flow. When water is free of air, turn faucets off. At this point, the pump is ready to use. Whenever all valves are shut off, the pump will stop automatically. If pump fail to stop, turn off the power switch and refer to the troubleshooting section in this manual.

## INSTALLATION

1. Remove shipping plugs from pump openings. There may be some water left from factory testing.
2. Select connectors of desired size (inlet A and discharge B). Install connectors. Firmly push slide clips C forward to secure port connectors.
3. Mount pump in an accessible location. If mounting vertically, make sure pump head stays down to keep motor from contact with water.
4. Use 1/2" (or 5/8") I.D. flexible hose (preferably braided or reinforced). Use hose clamps on connectors.
5. Install a strainer (for inspection and cleaning) in an accessible location between tank and pump inlet. You may also use SEAWORLD strainer (not included) which may be directly attached to pump inlet. This strainer or equivalent is required for pump warranty to be valid.
6. Cut-off pressure (adjust only when necessary) may be adjusted with screw at D. Turning the screw clockwise increases the cut-off pressure setting. Turning counter-clockwise lowers setting. Do not remove screw.



## WIRING

1. From power source, use 14 gauge stranded wire up to 20', 12 gauge wire up to 50'.
2. Use a 10-15 amp rated on-off switch on the (+) positive motor lead.
3. Install 10 amp fuse protection on the positive lead.



## OPTIONAL ACCESSORIES

### Available Port Connectors



1/2" straight  
P/N: 27070



1/2" 90° elbow  
27071



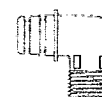
5/8" straight  
27072



5/8" 90° elbow  
27073



1/2" BSP straight  
27080



1/2" BSP 90° elbow  
27081

## SEAWORLD Strainer (P/N: 10766)



- Mounts directly to pump inlet
- Basic model comes with 1/2" connectors
- May add 5/8" connector, or simply use the original connector from pump.

## TROUBLESHOOTING

**\*\* Warning: Turn off power and drain water from system before servicing.**

Loose components in hardware might cause system to not functioning correctly. Before going further, please check system components and tighten the parts if found loose. If problem persists, please check items below.

### Motor does not turn on

- Insufficient voltage
- Pressure switch malfunction
- Cut-off pressure setting too low
- Loose connections
- Damaged motor
- Incorrect wiring
- Blown fuse or breaker

### Low or uneven flow

- Air leak in intake line
- Clogging; debris in pump or plumbing
- Worn bearings
- Damaged pump diaphragm
- Damaged motor
- Loose plumbing parts

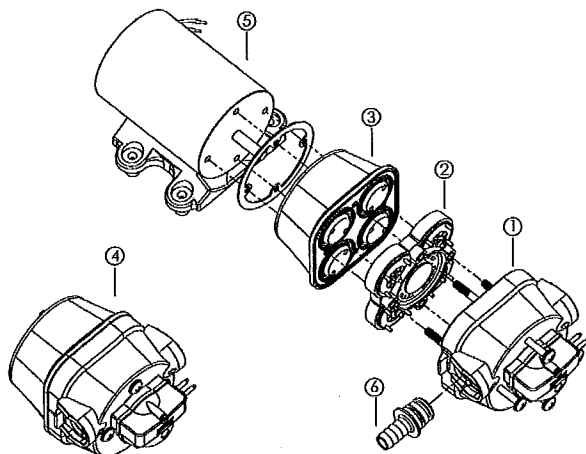
### Motor runs but no discharge

- Intake and discharge reversed
- Tank empty
- Air leak in intake line
- Crack in housing or loose screws
- Restricted inlet/outlet plumbing
- Debris in pump inlet/outlet valves
- Damaged pump diaphragm
- Strainer clogged with debris

### Pump does not shut off when all faucets/valves are closed

- Empty water tank
- Insufficient voltage
- Low pressure in the system
- Air trapped in pump head
- Damaged pump diaphragm
- Leaks on discharge side
- Pressure switch malfunction
- Cut-off pressure setting too high
- Leaky valves in appliances (i.e. toilet, heater)

## Service and Replacement Parts



If motor or pump components require maintenance or replacement, please refer to the following drawing and list of parts and contact local distributor. To disassemble and re-assemble pump, refer to instructions below.

Item	Description
1	Front housing (w/ pressure switch)
2	Valve seat
3	Diaphragm assembly (w/ gasket)
4	Pump head assembly (includes 1~3)
5	Motor
6	Connectors (see "Accessories")

1. Before disassembling, shut off water supply to pump. Drain water from pump if possible and switch off power.
2. Remove pump head assembly (item 4 on drawing): loosen the four large screws on the front housing, but do not remove them yet. Separate the entire head assembly from motor.

### CAUTION:

- Do not loosen other screws. Disassembling parts other than instructed may cause wear and leak.
  - Keep motor from contact with water.
3. Disassemble pump head assembly by sliding parts off the large screws. Replace components (items 1~3) as necessary.
  4. Re-assemble pump head assembly: align all parts on the four screws. Make sure the four small rubber seals on the screws are securely in place (check inside the front housing, item 1). Properly align diaphragm and hold the assembly tightly.
  5. Mount pump head assembly to motor: orient the assembly as shown in drawing. Make sure gasket is between head assembly and motor. Tighten the four screws.